



Elevator Sill Solutions
by Archi-Tread®

Specification Guide
to
Owners, Architect's and Consultant's

SILLSKINS®
Elevator Sill Overlay

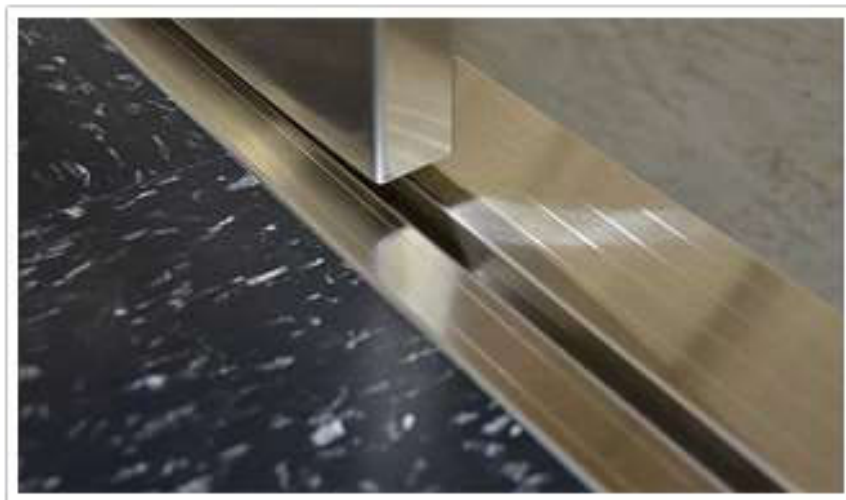


Table of Contents

- SILLSKIN® Elevator Sill Finish Solution 3
 - Products: 3
 - APPLICATION 3
 - Benefits 3
- Construction Specifications Institute (CSI) - Division 14 Revisions 4
- Owner Requirements..... 6
- Proposal for Installation of SILLSKIN® Modernization Overlay ... **Error! Bookmark not defined.**
- MATERIAL ORDER FORM..... 7

SILLSKIN® Elevator Sill Finish Solution

SILLSKIN® by Archi-Tread®, Inc. is a revolutionary elevator sill cladding for building owners who value durable premium finishes and their budget. SILLSKIN® cladding process provides owners an alternative to the expensive and time consuming method of removing and replacing existing sills. Within hours a new SILLSKIN® Cladding product can be installed. Most commonly requested finishes include: Stainless Steel and Bronze. Additional Options include: Extended Seamless Apron; Heavy Duty High Traffic cladding; and custom finishes. Installation of SILLSKIN® Cladding is performed by Archi-Tread®, Inc. authorized and trained technicians.

Products:

SILLSKIN® Modernization Cladding overlays onto the existing hoistway elevator sill providing the owner with a new premium finish. Typical installations are completed within hours by an Archi-Tread, Inc. authorized and trained technicians.

SILLSKIN® Construction Cladding is the solution to ensure elevator sill finishes are in pristine condition at turn-over. Extruded aluminum base sills provided by Archi-Tread®, Inc. are installed by the elevator contractor during the elevator installation phase. Once the heavy building construction is completed an Archi-Tread®, Inc. authorized and trained technician will field apply the SILLSKIN® cladding.

SILLSKIN® Sill provides a low cost option to full stock premium finish sills. SILLSKIN® Sills are designed to match any OEM or independent's sill profiles. Factory fabricated with an extruded aluminum base and SILLSKIN® cladding in the finish of choice. (Available in Stainless Steel, Bronze, and a variety of custom finishes and alloys) SILLSKIN® Sills are shipped to and installed by the elevator contractor.

APPLICATION

- Modernization
- Finish Upgrades
- Adding to or raising existing floors
- Construction
- Damaged sill

Benefits

- Lowest Cost Premium Finish Sill Available
- Match SILLSKIN® finish to hoistway frame or cab finish
- Custom finishes and alloys available
- Fast Delivery
- SILLSKIN® Modernization Cladding:
 - No disruption or damage to existing flooring or frame
 - Seamless integration with existing door assembly
 - Reduced installation time (from 2 days to a few hours)

Construction Specifications Institute (CSI) - Division 14 Revisions

Division 14200 Conveying System elevator sill revision to include SILLSKIN® products.

NOTE: When developing specifications to include SILLSKIN the specifier should clarify designated landings/car requiring SILLSKIN® products. All other landing sills requiring aluminum finishes should be provided by the Original Equipment Manufacturer or other independent supplier of sill products.

QUALITY ASSURANCE

Installer: SILLSKIN® Cladding shall be installed by Archi-Tread®, Inc. authorized and trained technicians.

PART 1 - SUBMITTALS

Product Data: Submit manufacturer's product data for each system proposed for use. Include the following: ADD: Hoistway Entrance sills and Car sill details.

PART 2 - HOISTWAY ENTRANCES:

Sills:

- a. Sills shall be extruded aluminum at levels <insert floor designations>.
- b. Premium finish sills shall be Archi-Tread Inc. <#4 Stainless Steel; #4 Bronze; Insert custom finish listed on www.archi-tread.com)> at levels <insert floor designations>.
- c. Options to be provided include:
 - i. Extended Apron; Heavy Duty cladding
 - ii. SILLSKIN® Modernization Cladding><SILLSKIN® Construction Cladding><SILLSKIN® Sill>

PART 2 - CAR ENTRANCES:

Sills:

- a. Sills shall be extruded aluminum on car(s) <insert car designation(s)>.
- b. Premium finish sills shall be Archi-Tread Inc. <#4 Stainless Steel; #4 Bronze; Insert custom finish listed on www.archi-tread.com)> on car(s) <insert car designations>.
- c. Options to be provided include:
 - i. Heavy Duty cladding
 - ii. SILLSKIN® Modernization Cladding><SILLSKIN® Construction Cladding><SILLSKIN® Sill>

PART 3 – EXECUTION:

Installation: *Insert installation description for applicable SILLSKIN® product.*

SILLSKIN® Modernization Cladding shall be performed by Archi-Tread®, Inc. authorized and trained technicians

SILLSKIN® Construction Cladding is a two part process. Part one requires the elevator contractor to install the aluminum sill. Part two requires an Archi-Tread®, Inc. authorized and trained technician to apply finished cladding. Elevator contractor shall request, 15 working days in advance, Archi-Tread, Inc. to begin cladding installation.

SILLSKIN® Sill shall be installed by elevator contractor.

NOTE: The following includes typical sections related to the Division 14 elevator specifications. I believe the Division 14200 sections are sufficient and Section 01500 and 05500 could be omitted from the SILLSKIN revision.

Related work not specified herein: The following sections contain requirements that relate to this section and are performed by trades other than the elevator manufacturer/installer.

1. **Section 01500 - Construction Facilities and Temporary Controls:** protection of floor openings and personnel barriers; temporary power and lighting.
2. **Section 05500 - Metal Fabrications:** pit ladder, divider beams, support for entrances and rails, hoisting beam at top of hoistway.

Owner Requirements

Job Site Requirements for Owner or Prime Contractor:

Security: provide all necessary security access forms along with purchase order.

Parking: provide parking for a minimum of one full size van/truck.

Work Space: coordinate with Archi-Tread®, Inc. representative to establish working area.

Smoke Detectors: it is recommended to cover lobby smoke detectors during installation. Owner shall verify and request permit if required by authorities. (i.e. Burn Permits)

Pit: must be clean and dry prior to start of installation. (applies only if work is to be performed from Pit area)

Pit Ladder: fixed ladders in each pit as required by governing code, size of pocket and location shown per Otis layout.

Outlet: Provide 20 Amp electric outlet.

Elevator: elevator contractor shall coordinate with Archi-Tread®, Inc. installer for positioning of elevator.

BARRICADES MUST MEET OSHA MINIMUM REQUIREMENTS

MATERIAL ORDER FORM

Customer:

Project Name:

Date:

OPTIONAL FORMAT: Table to include Vertical list of finishes, gauge, length

Floor # / Car #	QTY	Model	Finish	Gauge	Door Speed	Length	A	B	C	D	O.W (A+B+C)	Length

Specifications:

Model: Modernization (Mod) New Construction (New)
 Finish: Stainless Steel Bronze Other _____
 Gauge: Standard (ST) 0.062 inch (1.58 mm) Heavy Duty (HD) 0.187 inch (4.76 mm)
 Standard Length: 8',10' optional custom length available
 Door Speed: Single Speed (SS), Two Speed (TS), Other (provide description in notes)

Options:

Custom finishes
 Length
 Sill hardware with concrete anchors or bolt, nuts, washer package for steel support fastening.
 Sill extension in matching color

LIST EXISTING MATERIAL

Example:

Floor # / Car #	QTY	Model	Finish	Gauge	A	B	C	D	O.W (A+B+C)	Length
Car 1-2	2	New	#4 Bronze	ST	1"	1/2"	4"	9/16"	5 1/2"	68"
Fl: L	1	Mod	#4 Bronze	ST	1"	1/2"	4"	9/16"	5 1/2"	68"
Fl: B2, B1, 1- 10	1	Mod	#4 Stainless Steel	ST	1"	1/2"	4"	9/16"	5 1/2"	68"